

Fact Sheet

Parking around schools

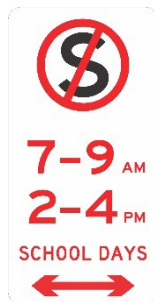
8 December 2023

Vehicle parking around schools is regulated during school times with changed parking and stopping of vehicles.

Speed limits and drop-off, pick-up and parking rules exist to keep children, parents, and carers safe and to minimise speed and traffic jams around schools.

Parking

Schools are busy areas. There are often lots of children, and they do not always understand the danger of roads and vehicles. Make sure to take extra care when parking on school grounds and on the roads and streets around the school and follow the signed parking rules at all times.



Example "No Stopping" sign

Parking signs and markings

You should always check parking signs carefully near schools as they are often stricter than normal parking rules. The type of parking restriction, and the times that apply, will be on the sign.

Signs and markings you are likely to find near schools are:

- parking signs, for example, some streets near schools have 15-minute parking limits during school zone hours
- no stopping signs
- yellow edge lines where stopping and parking is prohibited
- no parking signs
- loading zone signs, used in pick-up or drop-off areas.

Parking and stopping of a vehicle

Unlawful vehicle parking is regulated under the Queensland State Road Rules which are: *Transport Operations (Road Use Management - Road Rules) Regulation 2009.*

Not all stopping and parking rules are indicated by signs or lines on the road.

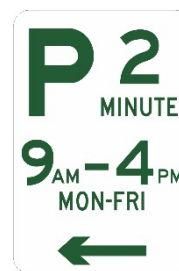
A selection of relevant examples has been included to help provide some clarity regarding stopping and parking vehicles around schools.

For more information about parking and road rules, including a road rules refresher, visit the Queensland Government's Department of Transport and Main Roads website <https://www.tmr.qld.gov.au/safety>.

Drop off and pick up areas

Drop-off and pick-up areas are normally signed as per the 2 signs pictured below. These areas are only for the quick pick up and drop off your children. They are no parking zones called "kiss and go zones". All drivers must obey whatever signs are in place.

These zones are designated to create a safe environment for children and keep traffic moving.



Example "2-minute parking" sign



Example "Passenger Loading Zone" sign

Drop-off and pick-up areas are signed with passenger loading zone signs or 2-minute parking signs. These signs mean you have a maximum of 2 minutes to drop off or collect your children.

Parking around schools

How they work

There can often be queues at drop-off and pick-up areas, near and outside schools.

When using a drop-off and pick-up area you:

- must use the area like a quick moving taxi rank
- need to move forward in the queue of vehicles to the signed area
- can get out of your vehicle to help your children get in and out safely, once you are in the signed area
- are only allowed 2 minutes in the signed area. If you take any longer you may be fined. If your children are not ready to get straight into your vehicle at pick-up time, you will need to drive round the block and queue to enter the area again
- should only let your children out once you have pulled into the signed area. It is dangerous to let them out while waiting in a queue.

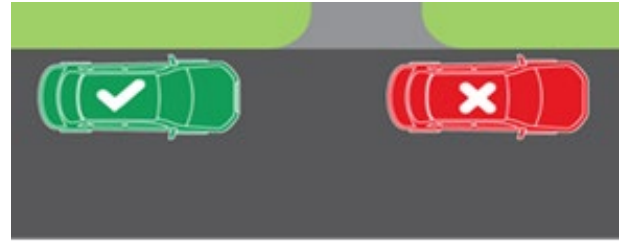
Parallel parking on a road - except in a median strip parking area

If a driver does not park in a parking bay, the driver must position the vehicle at least 1 metre from the closest point of any vehicle in front of it and any vehicle behind it. The vehicle must be facing the direction of traffic.

Is a vehicle allowed to park near or across a driveway?

Motorists may stop across a driveway to pick up or set down passengers for up to two minutes, provided they do not actually obstruct immediate access and do not leave the vehicle unattended. Otherwise, it is unlawful.

If a vehicle is parked, unattended, and blocking property access, then it is parked unlawfully, and the vehicle will be issued an infringement notice.

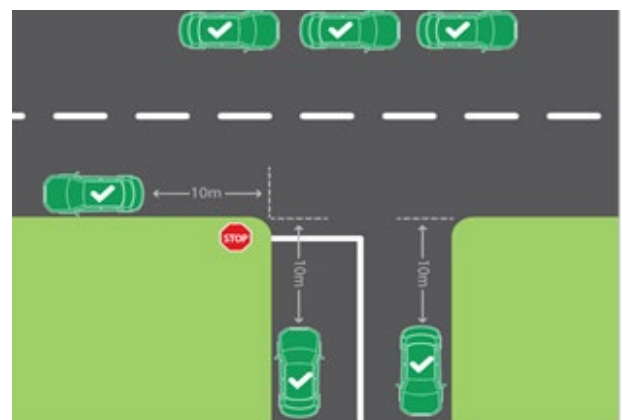
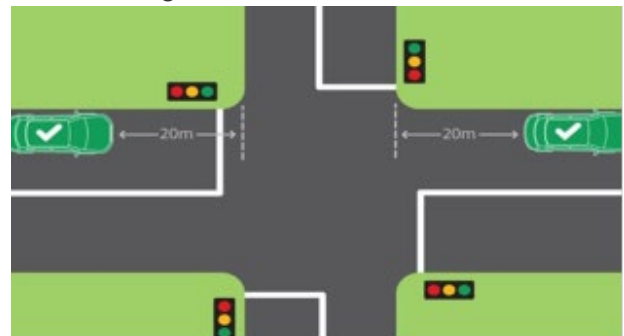


The vehicle may also be towed by authority of the police. Police should be contacted through Policelink on 131 444.

How close can a car park to an intersection?

Motorists must not stop or park their vehicle within:

- 20 metres of a signalised intersection, unless otherwise signed, has yellow lines or a dividing white line.
- 10 metres of a non-signalised intersection, unless otherwise signed, has yellow lines or a dividing white line.

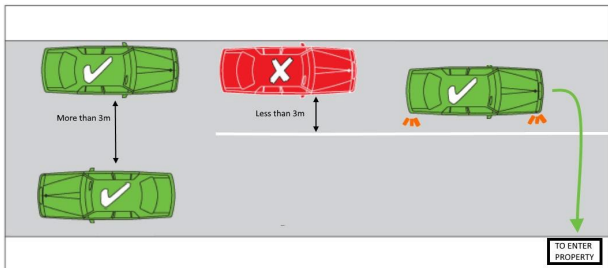


Ref: 66826944

Parking around schools

Cars often park on both sides of the road so only one car can fit through at a time. Is this legal?

Motorists may park on both sides of the road, if there are no signs stating otherwise or no yellow lines. Vehicles must also leave at least three metres of clear roadway between their vehicle and other parked vehicles, dividing strips, traffic islands or unbroken dividing lines.



Can I pull up quickly on the grass or footpath?

Motorists **must not** stop and/or park on:

- footpaths
- nature strips or with two wheels up on nature strip
- dividing strips, painted islands or traffic islands.

Motorists **must:**

- park vehicle on the street
- ensure all tyres of any vehicle parked on the street are on the road surface
- abide with other road rules.

Know the signs

In some locations 'No Stopping' and 'No Parking' signage has been installed to assist with traffic flow, ease congestion and enhance safety for road users.

'No Stopping'



Signed or solid yellow line - motorists are not allowed to stop for any purpose.

'No Parking'



Signed - motorists are not allowed to park at any time. However, they are able to stop and drop-off or pick-up passengers or goods for up to two minutes. The driver must be within three metres of the car at all times.

For more information

Further information on parking is available at www.moretonbay.qld.gov.au/parking or visit www.tmr.qld.gov.au/safety for parking, road rules and road rules refresher.

Alternatively, contact council.

W moretonbay.qld.gov.au | **T** 07 3205 0555

E council@moretonbay.qld.gov.au

Ref: 66826944

Parking around schools

For more information

W moretonbay.qld.gov.au | **T** 07 3205 0555 | **E** council@moretonbay.qld.gov.au

Ref: 66826944